

Product information

Metra-flow OG6 200 L/Min oval gear meter

- Excellent chemical resistance
- Rugged construction
- Individual calibration
- High viscosity capability
- Low pressure loss
- No flow conditioning required
- Hall or reed switch sensor
- Accuracy 1.0% reading water
0.5% reading oil
- $\pm 0.25\%$ reading *
- 0.1% repeatability
- IP67/NEMA 4 protection
- Models to 400 Bar

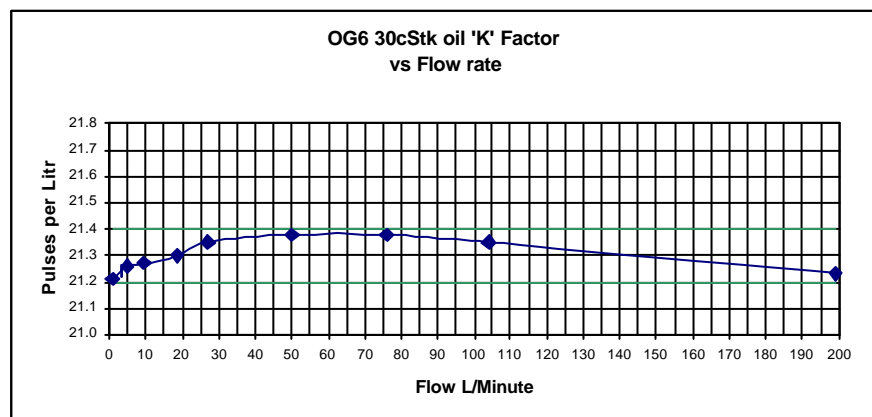
* When used with our metra-smart instrument

Ideal for

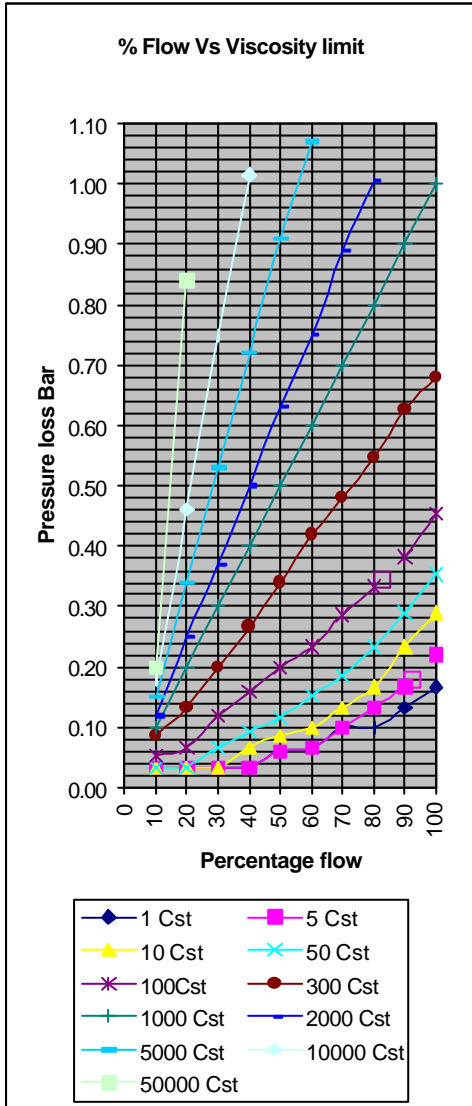
- ◆ Engine test
- ◆ Oil flow
- ◆ High viscosity fluids
- ◆ OEM equipment



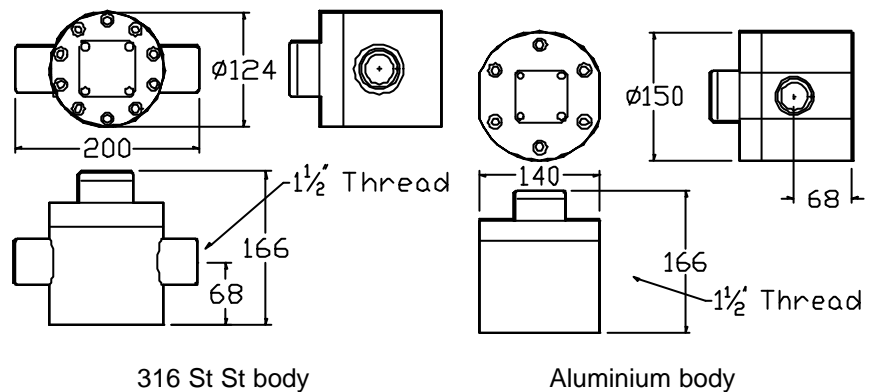
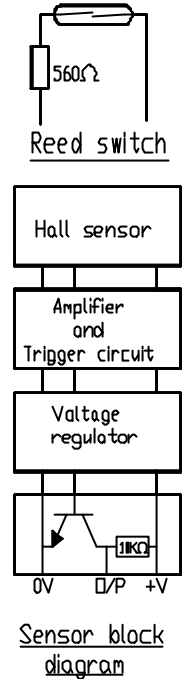
The rugged OG6 oval gear flowmeter is designed to give high performance with a low cost of ownership. It has a standard flow range from 2.0 to 200 L/Min on 30 Cstk oil and 10 to 200 L/min on water like liquids. It can have totally non-metallic wetted components, PEEK™, ceramic and an elastomer which makes this the ideal choice for the metering of aggressive chemicals. The standard inlet and outlet are 1½" female threads. For OEM use alternatives, including manifold mountings, are available. The standard model is 316 St St with Viton™ 'O' ring seal.



Sample product codes →	Stainless standard OG6-SS5-VHP-B	Aluminium standard OG6-AS1-VHP-B
Flow range - Water - 30 cSt Oil	10– 200 LPM 2.0 - 200 LPM	10– 200 LPM 2.0 - 200 LPM
Wetted materials - Body - Gears - Seal - Magnet	316 Stainless steel Carbon filled PEEK™ Viton™ Ceramic	Aluminium Carbon filled PEEK™ Viton™ Ceramic
Accuracy - Water - 30 cSt oil	± 1.0 % Reading ± 0.5% Reading	± 1.0 % Reading ± 0.5% Reading
Repeatability	± 0.1%	± 0.1%
Detector type	Hall effect	Hall effect
Terminations	M12 gland	M12 gland
Approximate 'K' factor - Pulses/Litre	21	21



At the heart of the meter are a pair of toothed oval gears one of which contains chemically resistant magnets, the gears rotate freely on robust bearings. Rotation is detected through the chamber wall by a Hall effect detector or a reed switch giving approximately 21 pulses per litre passed. The output is an NPN pulse or a voltage free contact closure either of which is readily interfaced with most electronic display or recording devices. This combination of materials and technology ensures a long life product with reliable, accurate operation throughout.



Model	Body material	Temp rating	Pressure rating	Seal mat'l	Detector type	Pipe thread	Connections	Display mounting options
OG6	316 St St S 50 Bar Std	80°C 158°F S	50 Bar 750 PSI 5	Viton V	Hall effect H	1/4" (OG1&2 standard) Q	BSP F B	Rate & Total on C meter
	Aluminium A 10 Bar max	100°C 212°F T	10 Bar 150 PSI 1	Nitrile N	Reed switch R	1/2" (OG3 Standard) H	NPT F N	Rate & total Ex on meter
		150°C 300°F U	400 Bar 5880 PSI 4	EPDM E		3/4" (OG4 standard) T	Flanged (specify) F	Rate & Total plus 4-20mA
				Kalrez K		1" (OG5 standard) U		Rate & total + 4-X 20mA Ex
						11/2" (OG6 standard) P		Metra-Batch on B meter
						2" (OG7 standard) D		Metra-Batch remote R

A stainless steel meter rated at 80°C, 50 Bar, with Viton™ seal, Hall effect detector and a 1" BSP thread would have the order code :-OG6-SS5-VHP-B