



11.02.2008Küerst.

JLC International
Phone: 215-340-2650
Fax: 215-340-3670

948 Lenape Drive Town Center, New Britain, PA 18901
jlcusa@jlcinternational.com
www.jlcinternational.com

M A N U A L
for
EE89-CUSTOMER-TESTBOARD

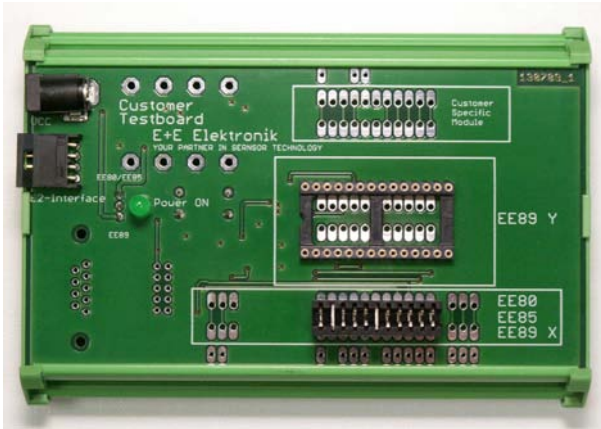
Table of Contents

| | |
|--------------------------------------|----------|
| 1. SCOPE OF SUPPLY: | 2 |
| 2. PREPARATION HARDWARE | 2 |
| 3. PREPARATION SOFTWARE | 3 |
| 4. USING THE TESTBOARD | 3 |

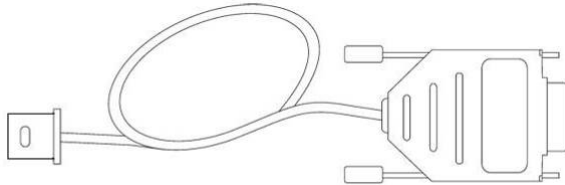
11.02.2008Küst.

1. Scope of Supply:

- Customer-Testboard



- E2-Interface to RS232 Converter



- Wall power supply



- CD with Software

2. Preparation Hardware

- Assembly the power supply with correct 2.1mm supply connector.



Check supply voltage is 6VDC
 positiv...Center of connector
 negativ...Outside of connector

- Connect the supply to the testboard
 PowerON-LED lights
- Connect the E2-Interface to RS232 Converter to the testboard and your PC

3. Preparation Software

- Install the “EE89 Runtime Engine” first.
Insert CD → open Folder ...\\EE89 Runtime Engine → execute “setup.exe”.
Note that you need administration authorizations
- Start the PC software “EE89_Eval_x.x.exe”

4. Using the Testboard

- Connect the EE89 to the testboard
EE89-xC9X – Type

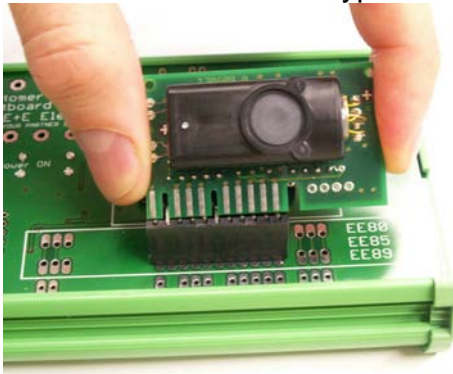


Figure 1 attend coding link

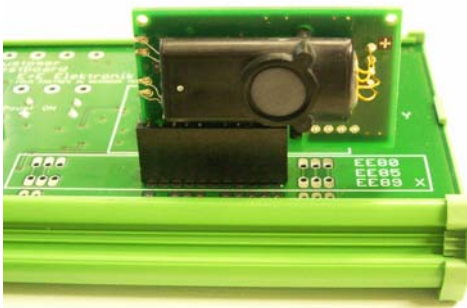


Figure 2

EE89-xC9Y – Type

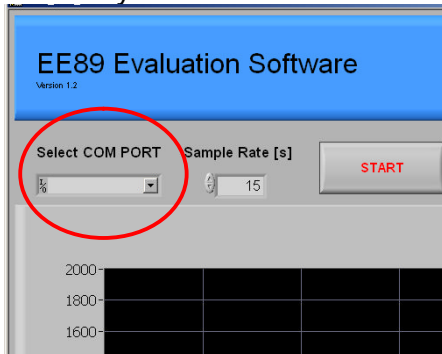


Figure 3 attend pinning



Figure 4
press carefully for fixing and
for removing

- Choose your RS232-Interface in the Eval-Software



The COM-Ports are called
„ASRL1::INST“ for COM1,
„ASRL2::INST“ for COM2,
...

- Press Start-Button

Note: The software queries a data every 15 seconds. You can reduce this time, but the EE89 does a measurement only every 15 seconds.

HEAD OFFICE:

E+E ELEKTRONIK Ges.m.b.H.
Langwiesen 7
A-4209 Engerwitzdorf
Austria
Tel: +43 / 7235 / 605-0
Fax: +43 / 7235 / 605-8
info@epluse.com

www.epluse.com